

# Advanced Wear Resistance Technology

*Engineered for Rail Component Repair*



 **HARDFACE**  
TECHNOLOGIES  
by POSTLE INDUSTRIES

[www.hardfacetechologies.com](http://www.hardfacetechologies.com)



## POSTLE INDUSTRIES

- ✦ OVER 40 YEARS OF EXPERIENCE IN THE MANUFACTURE OF HARDFACING CONSUMABLES
- ✦ CONSUMABLES DEVELOPED SPECIFICALLY FOR RAIL COMPONENTS
- ✦ CAN CUSTOMIZE PRODUCTS TO FIT YOUR NEEDS
- ✦ TECHNICAL EXPERTISE IN WELDING PROCEDURES AND APPLICATIONS
- ✦ ABLE TO PROVIDE FIELD OR CLASSROOM TRAINING



## PRODUCT FEATURES

- ✦ EXCELLENT OPERATOR APPEAL
- ✦ EASY SLAG REMOVAL
- ✦ LOW SPATTER
- ✦ EASY FEEDABILITY
- ✦ REDUCED GRINDING TIME
- ✦ UNLIMITED WELDING LAYERS



# PRODUCTS FOR MANGANESE FROGS AND CROSSINGS

## Electrodes

<b>POSTALLOY FROGTUFF</b>	
AC or DC Reverse Polarity	Deposits quickly become tougher and harder under load, and will not spall or mushroom.
	Tensile Strength            125,000 psi
	Yield Strength                80,000 psi
	Hardness as deposited      15-22 Rc
	Work-hardens up to         45-55 Rc
	Deposit Thickness            As Required
	Diameters available         1/8" (3.2mm), 5/32" (4.0mm), 3/16" (4.8mm), 7/32" (5.6mm)
<b>POSTALLOY 301</b>	
AC or DC Reverse Polarity	High strength, ductile, crack resistant stainless alloy designed for crack repair and provides a ductile build-up layer.
	Tensile Strength              Up to 120,000 psi
	Diameters available         1/8" (3.2mm), 5/32" (4.0mm)

## Self-Shielded Flux Cored Wire

<b>POSTALLOY FROGTUFF-FCO</b>	
DC Reverse Polarity	High alloy austenitic manganese steel welding wire that produces high-strength, crack resistant deposits that are tough, ductile and work-harden rapidly.
	Tensile Strength              135,000 psi
	Yield Strength                90,000 psi
	Hardness as deposited      20 Rc
	Work-hardens to              45-55 Rc
	Deposit Thickness            As Required
	Diameters available         1/16" (1.6mm), 5/64" (2.0mm)

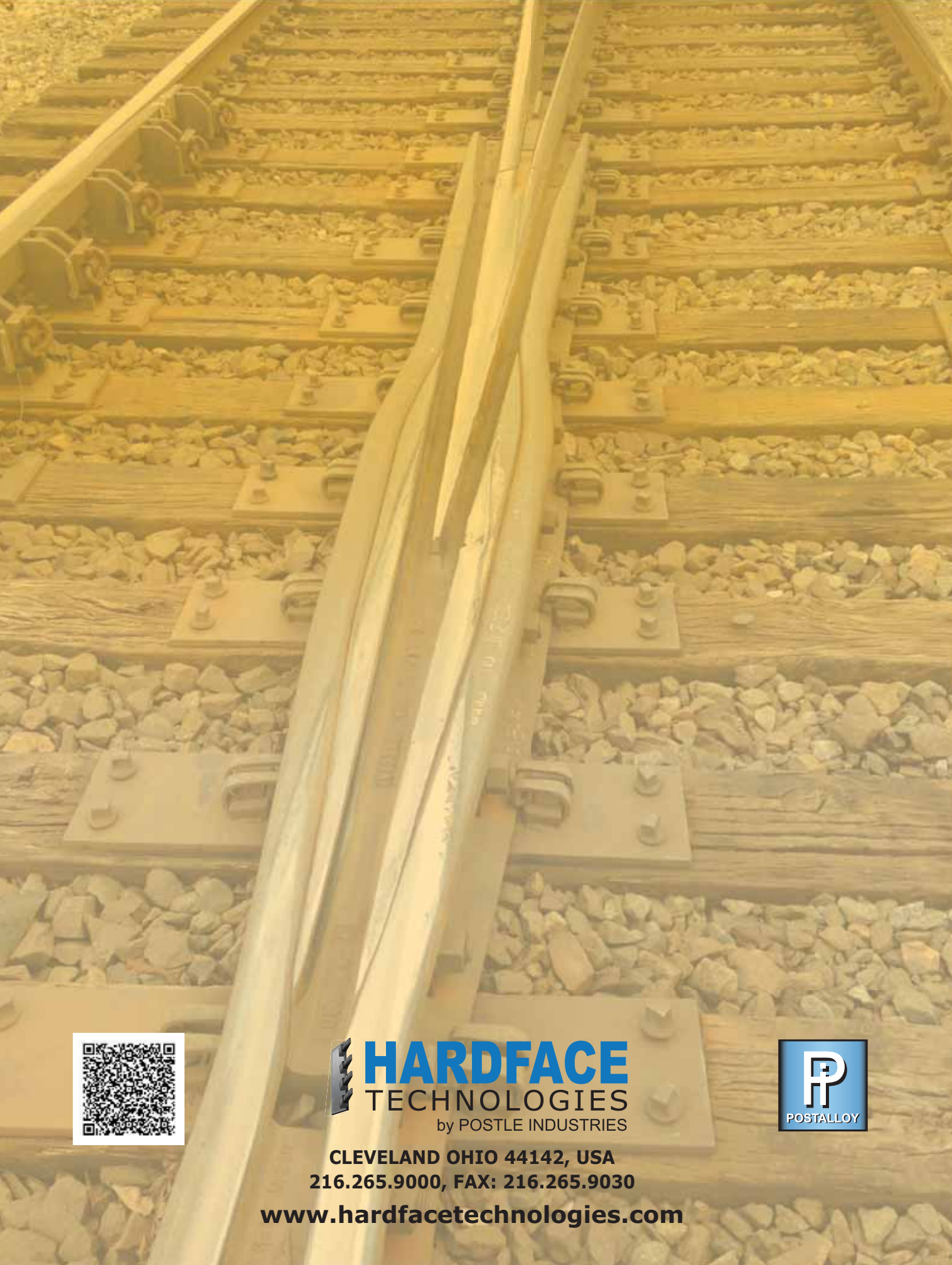
# PRODUCTS FOR CARBON STEEL RAIL ENDS

## Electrodes

<b>POSTALLOY RAILTUFF</b>	
AC or DC Reverse Polarity	A build-up electrode that provides wear resistance far superior to low, medium and low alloy carbon steels. Deposits are extremely tough and have a high resistance to impact and deformation. Not subject to spalling or roll-over. In addition, deposits are dense, crack-free and porosity-free.
	Hardness                        32 to 38 Rc
	Deposit Thickness            As Required
	Diameters available         5/32" (4.0mm), 3/16" (4.8mm), 1/4" (6.0mm)

## Self-Shielded Flux Cored Wire

<b>POSTALLOY RAILTUFF-FCO</b>	
DC Reverse Polarity	Strong, tough, low alloy build-up wire. It can be applied to carbon and low alloy steels. Weld deposits are exceptionally sound and dense, and heavy build-ups are possible without danger of cracking.
	Hardness                        30-35 Rc
	Deposit Thickness            As Required
	Diameters available         .045" (1.2mm), 1/16" 1.6mm), 5/64" (2.0mm)



**HARDFACE**  
TECHNOLOGIES  
by POSTLE INDUSTRIES



**CLEVELAND OHIO 44142, USA**  
**216.265.9000, FAX: 216.265.9030**  
**[www.hardfacetechnologies.com](http://www.hardfacetechnologies.com)**